

Oceanfront Retreat Southern Oregon Coast



Architect-Designed Home
32112 N. Chantrelle Lane
Gold Beach, Oregon
2.68 Acres Oceanfront
\$2,115,000



East Side - Main Entrance and Japanese Garden





West Side - Deck with Ocean Views





From the Bluff - 180° Views





A stone fireplace, cedar logs, warm woods, and a post & beam ceiling embellish the relaxing and spacious great room, dining room, and kitchen—all with ocean views. Radiant floor heating warms the house silently. A separate air filtration system keeps the interior air clean and fresh.



T H E I N T E R I O R



The generous and efficient kitchen connects to the great room, dining room, and a covered outdoor BBQ patio. Viking appliances complement the custom maple cabinets, birch flooring, and granite counter tops.





The library, just off the master suite, is a calm retreat with handsome built-in wood cabinets, bookshelves, and a warm fireplace. The two offices provide efficient and productive workspaces with proximity to the natural environment.



T H E I N T E R I O R



Local woods and Asian-inspired artistic elements create a tranquil Powder Room for guests.





Soothing rhythms of nearby waves promote sleep in the calm and spacious master bedroom. Natural materials blend harmoniously in the master bathroom, and the tub was intentionally positioned for ease of entry and optimal ocean views.



T H E I N T E R I O R



Two walk-in closets complete the master bathroom. The large laundry room is strategically placed adjacent to the closets.





A lower level den opens to a covered patio and fern garden. The dedicated fitness room is mirrored and can be closed off to the rest of the house.



T H E I N T E R I O R

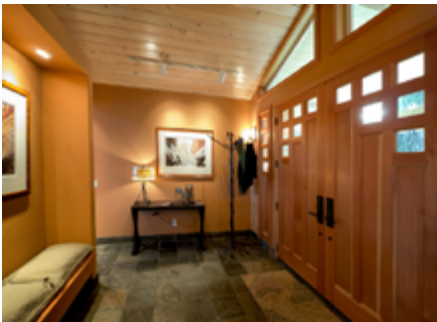


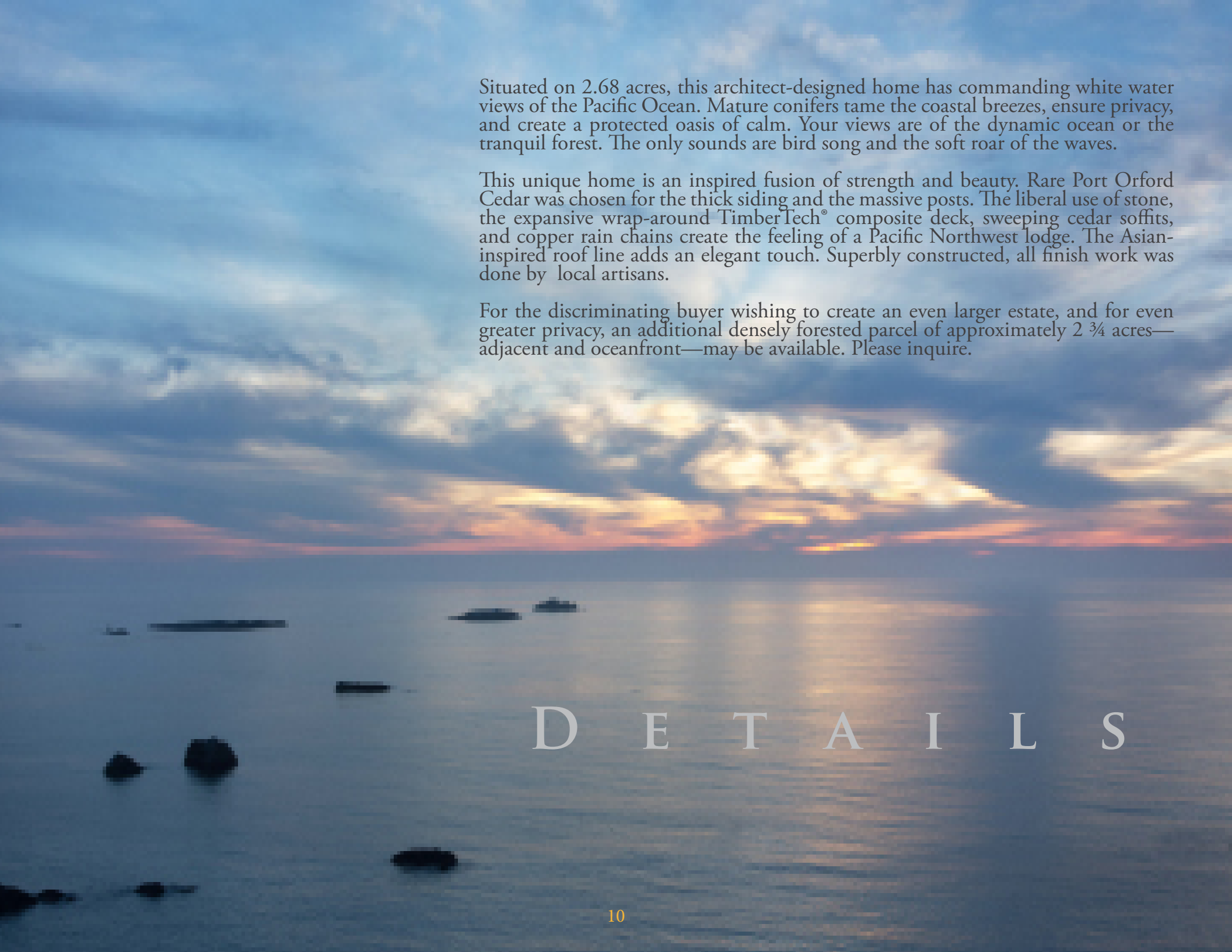
Two mirror-image guest rooms—each with individualized private bathrooms—complete the lower level.





D E T A I L S





Situated on 2.68 acres, this architect-designed home has commanding white water views of the Pacific Ocean. Mature conifers tame the coastal breezes, ensure privacy, and create a protected oasis of calm. Your views are of the dynamic ocean or the tranquil forest. The only sounds are bird song and the soft roar of the waves.

This unique home is an inspired fusion of strength and beauty. Rare Port Orford Cedar was chosen for the thick siding and the massive posts. The liberal use of stone, the expansive wrap-around TimberTech® composite deck, sweeping cedar soffits, and copper rain chains create the feeling of a Pacific Northwest lodge. The Asian-inspired roof line adds an elegant touch. Superbly constructed, all finish work was done by local artisans.

For the discriminating buyer wishing to create an even larger estate, and for even greater privacy, an additional densely forested parcel of approximately 2 ¾ acres—adjacent and oceanfront—may be available. Please inquire.

D E T A I L S

C O N T A C T

Lynn Wegner PC, Principal Broker, GRI

Pacific Coastal Real Estate

mobile/text: 541-698-6023

office: 541-247-7925

email: lynn@pacificcoastalrealestate.com

website: <http://www.realestategoldbeach.com>

